



Commodity name display



Cartridge loading type label installation



Direct PLU keys & function keys

CL5000J SERIES

Label Printing Scale

CL5000J series is the most effective business network solution with economic price.

- Flexible & Reliable network system (wired/wireless)
- Fast network downloading and user friendly PC software



CAS

Label Printing Scale

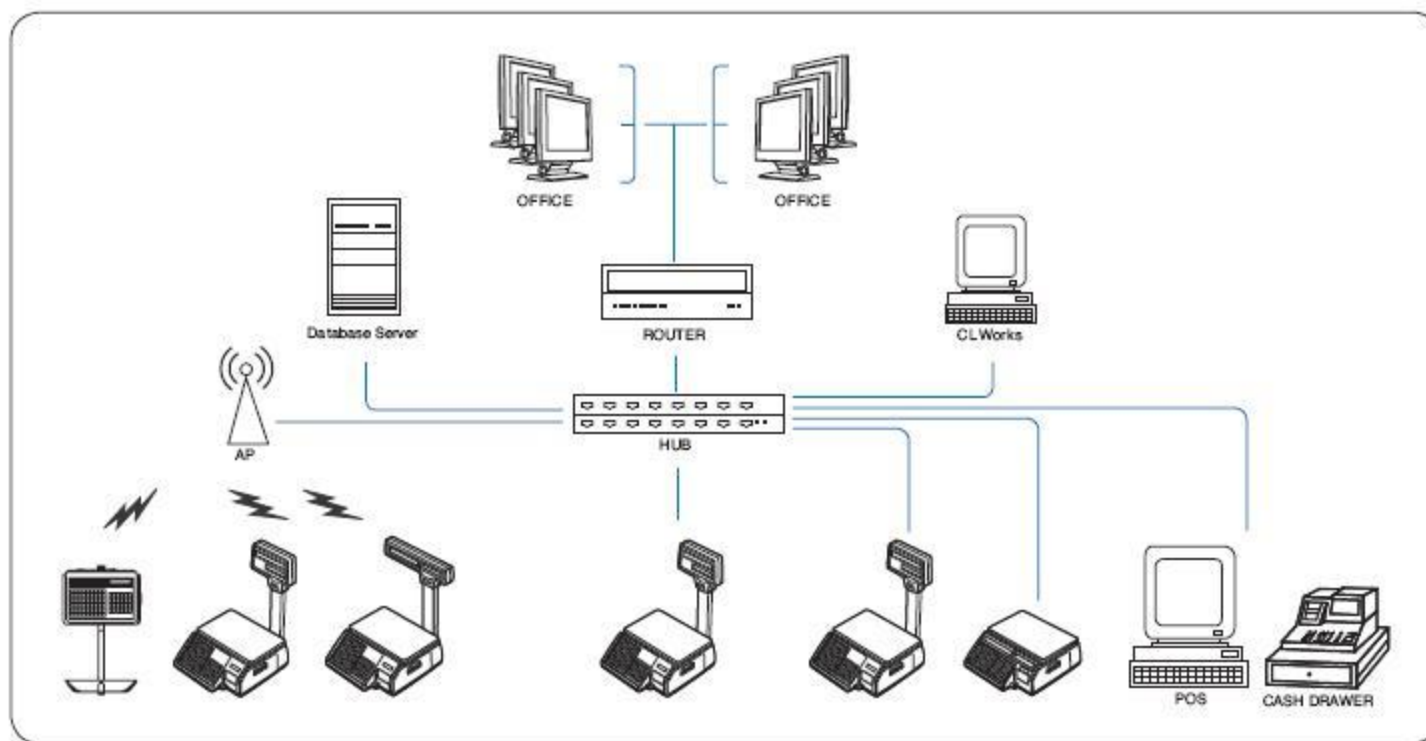


Product Line-up

CL5000J Series are suitable for any circumstance market sizes with economic price



Network System



Wired /Wireless Network

- ▶ TCP/IP communication protocol
- ▶ IEEE802.11G specification wireless network
- ▶ 64/128 bit WEP security system, WPA(TKIP), WPA-II
- ▶ Multi & wired/wireless network (local network, Internet service)
- ▶ Network structure for
 - Large, medium and small independent markets
 - Hyper market



Middleware system - Headquarter managing solution

- ▶ Data transmission time scheduling
- ▶ Remote database server accessing
- ▶ Multiple scale report management



CL5000J SERIES



Features

Display - LCD

The LCD display is used for displaying 4 digits of tare value, 5 digits of weight value, 6 digits of unit price and 6 digits of total price. And the dot matrix LCD display (60x8 dots) is used for displaying commodity name up to 12 characters.



Menu System

Unique 4 digits 'Menu Code' entry pin point the desire program field.

ex) Menu Code "1120" is for Editing PLU name.

PLU specification & Memory

2MB memory can hold up to 6000 PLUs with commodity name or ingredient.

Ingredients

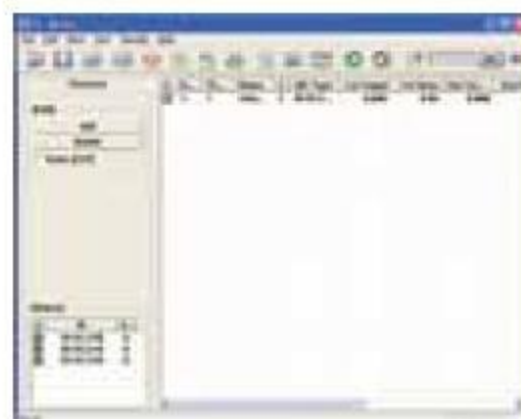
- 1,000 Direct Ingredients (300byte / pcs)
- 100 Indirect Ingredients (400byte / pcs)



PC software : CL-works

User-Friendly Scale management software

PLU programming, store data, sales report, label editor, key-pad editor and much more, control all the program data by CL - works program.



PLU Editor

Enable to easy PLU control
Allows PLUs management by excel



Label Editor

20 modifiable label formats
Easy downloading of label formats



Keypad Editor

Easy to setup and download
Key design colour Image
Keypad supported

Printer mechanism

High speed print (75mm/sec)-cartridge loading type label installation with high quality ROHM printer head (50km/5x107 pluses) makes so much easier to replace a new roll of lable.



Label & Barcode Types

CL5000J allows full graphic label design!
It provides 40 free label format.

Barcode type

- EAN-13, 120F5, CODE128C



Communication

CL5000J is built in TCP/IP (Wired) network card and RS-232C interface used to connect with PC or printer.

- IEEE802. 11G Ethernet supports data transmission speed of 50 PLU/sec



CL5000J SERIES | Label Printing Scale

SPECIFICATIONS

Model	CL5000J-C		
Max.capacity (kg)	6	6/15	15/30
Readability (g)	2	2/5	5/10
Tare range (kg)	-5.998	-5.998	-9.995
External resolution	1/3,000 (Dual interval)		
Display digit	4 / 5 / 6 / 6 (Preset tare / weight / unit price / total price)		
Display type	4 LCD displays + Dot matrix LCD (60 x 8 dots)		
Printing speed	75mm/sec		
Printer resolution	202dpi		
Label size (mm)	Width : 40 ~ 64 Length : 30 ~ 120		
Power	AC 100 ~ 240V, 50/60Hz		
Operating temperature	-10°C ~ +40°C		
Platter size (mm)	382(W) x 246(D)		
Dimensions (mm)	CB type : 480(W) x 432(D) x 173(H) CP type : 408(W) x 493(D) x 607(H) CR type : 408(W) x 493(D) x 542(H) CH type : 420(W) x 281(D) x 706(H) CS type : 408(W) x 493(D) x 703(H)		
Product weight (kg)	CB type : 10.5 CR type : 12.0 CP type : 11.2 CH type : 12.2 CS type : 15.1		

FEATURES

- Memory capacity
 - 6,000 PLUs & 1,000 direct ingredients(300 byte/pcs)
- Speed key
 - Standard : 96 speed keys [48 keys x 2 (shift key)]
 - Pole : 144 speed keys [72 keys x 2 (shift key)]
 - Hanging : 144 speed keys [72 keys x 2 (double-click)]
 - Self service : Up to 172 speed keys
- High-speed thermal printer
- Fast PLU down load: 50PLUs/sec
- Wire / Wireless network
- Cartridge -loading-type label installation
- 30 fixed format & 10 free label format design

OPTION

- Wireless bridge card
- Dust protection cover
- Platter with back rail
- Large platter/Fish tray
- Metal-dome switch
- PC manager program (CL - Works)


新發興機械(馬)有限公司
Sin Huat Hin Machinery (M) Sdn. Bhd.
 241232-A Since 1968

HQ: -
697, Tmn Chi Aik, Jln Tun Dr. Ismail, 70200 Seremban, NSDK.
T: +(6) 06 763 3333 F: +(6) 06 765 3334 E: sinhuathin@shhmach.com

KL Branch Office: -
B1-00-20, Jln SR 1/9, Tmn Serdang Raya, Section 9, 43300 Seri Kembangan, Selangor.
T: +(6) 03 8945 2202 F: +(6) 03 8948 3151 E: sinhuathinkl@shhmach.com

Visit us at www.shhmach.com

Specifications are subject to change for improvement without prior notice.

DIMENSIONS

